

CLARITY TELEMONITORING PLATFORM

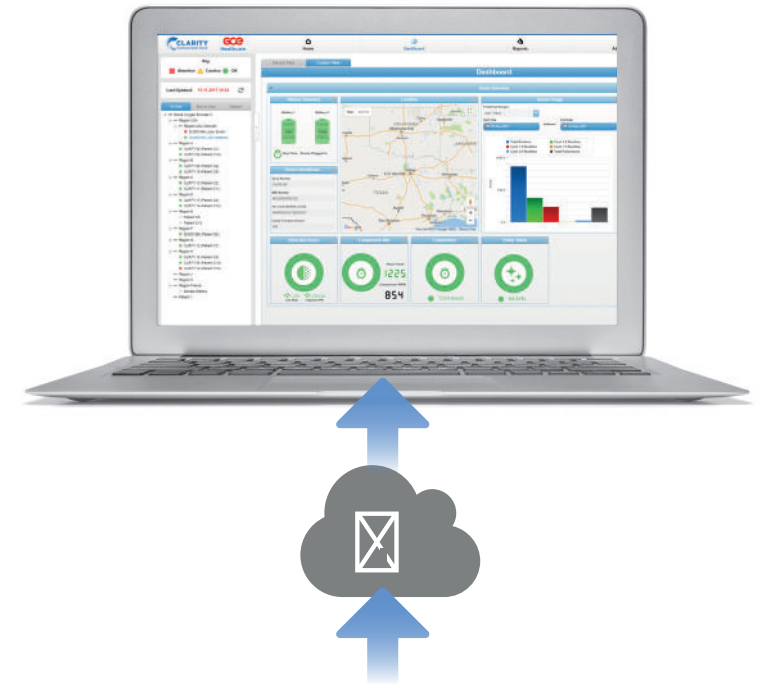
BETTER INFORMED, BETTER CARE...

COST-EFFECTIVE REMOTE MONITORING FROM ANY DEVICE, ANYWHERE

Clarity from GCE Healthcare, is a secure telemonitoring platform that uses smart, secure and connected technology to help you – the home oxygen provider – remotely monitor GCE's Zen-O™ portable oxygen concentrator (POC).

With a wealth of information at your fingertips, you can reduce operating and maintenance costs by planning time and resources more efficiently and effectively.

Clarity's user-friendly system allows you to check on device performance closely and easily. Using a desktop, laptop, tablet or mobile, you can access the data 24/7 from anywhere in the world.



HOW CLARITY WORKS

Clarity enabled Zen-O™ POCs use cellular technology to securely transmit data between POC and the cloud.



Patients, their families and caregivers can also access the platform – providing an enhanced network of support.



As long as there is cellular network in the area, Clarity will deliver data daily – even when patients are travelling abroad*.



*Please see page 10 for list of countries covered

BENEFITS FOR O₂ PROVIDERS

By adopting Clarity, you can enjoy the benefits of operational efficiencies and reduced costs gained from being able to monitor any device, anywhere, while improving patient care.

COST SAVINGS USING PREDICTIVE MAINTENANCE

Reduce your operating costs by planning when and how you use your resources. With predictive maintenance, you will receive a notification when components, such as the compressor, need to be serviced or changed.

FLEET VISIBILITY ANYWHERE IN THE WORLD

You can log-in to Clarity to locate your enabled Zen-O™ portable oxygen concentrators (POCs), check their status and evaluate performance. From the easy-to-use dashboard, you can monitor:

- oxygen purity
- compressor and sieve status
- battery charge cycles
- device usage history
- fault codes and more

EASY-TO-UNDERSTAND TRAFFIC LIGHT ALARM SYSTEM

Using a simple traffic light alarm system, you can see how your assets are performing anywhere in the world*. Detect any issues with a POC before they happen and save time and resources in response.



ACT FAST WITH EMAIL NOTIFICATION OF FAULTS

Email alerts prompt you to log-in to the platform and investigate any potential faults – enabling you to act quickly if there is a fault. This saves you time and money as well as impressing your patients with your proactive service and support.

IMPROVE SERVICE LEVELS WITH PROACTIVE CARE

With Clarity you can also improve service levels to patients through proactive visits. If a technician is visiting an area and a local POC indicates a potential issue or a scheduled component replacement is required (flagged by an amber alert), the technician can be sent to deal with it while they are in the vicinity.

You will generate positive feedback from happy customers, which you can position when you re-tender.

EASILY GENERATED REPORTS

Clarity can generate reports for a single device or your entire fleet.





HIGH-LEVEL DATA SECURITY AND STORAGE FOR PEACE OF MIND

GCE Healthcare takes data security very seriously and uses best-in-class security protocols to transmit and store data. Measures we have taken to secure data include:

- Use of a private and secure network, when transmitting data between the connected Zen-O™ and the Clarity platform
- Using secure sockets layer (SSL) protocols to authenticate and encrypt data during transmission to and from the Cloud, to provide privacy and data integrity
- Hosting the data with a leading industry Cloud supplier, who has a worldwide reputation for excellence in data security

In addition, password protection provides another layer of security with users only able to access the platform via username and password. Giving you and your patients peace of mind.

OPTIMIZE YOUR ASSETS

Clarity shows usage history of a connected Zen-O™ portable oxygen concentrator. Allowing you to decide whether a POC would be better deployed elsewhere, ensuring you do not deploy more POCs than required.

Clarity's cellular and GPS technology means you can track the location of POCs anywhere in the world* (subject to local laws, guidelines and patient consent).

For a list of the countries where you can monitor and track data without additional roaming fees, please see page 10.

*Please see page 10 for a list of countries covered by Clarity

CLARITY FAQs

WHAT IS CLARITY?

Clarity is a secure web based telemonitoring platform that uses cellular technology and cloud services to securely transmit and host data about an enabled Zen-O™ portable oxygen concentrator (POC).

WHAT CAN I DO WITH CLARITY?

Clarity shows operational and performance data of connected Zen-O™ portable oxygen concentrators. These data points enable you to provide proactive care and support for patients. More features will be added to the platform that will further enhance patient care.

HOW CAN I ACCESS CLARITY?

Clarity is available when you sign up to the service and includes the option of giving your patients access to the platform. Both you and your patients will need a username and password to log-in to the platform using the web address www.gceclarity.com.

In addition, patients can grant their family, friends and caregivers access to the Clarity platform – giving patients an additional support network.

CAN I USE CLARITY ON MY MOBILE PHONE AND TABLET?

Yes, Clarity's web interface can be accessed from any internet enabled device.

DO I NEED WIFI FOR CLARITY TO WORK?

No, Clarity enabled Zen-O™ portable oxygen concentrators (POCs) use GSM/cellular technology to transmit data, so the enabled POC does not depend on wifi connection to transmit data or diagnose a fault on the device.

CAN THE ZEN-O™ PORTABLE OXYGEN CONCENTRATOR BE REPAIRED REMOTELY?

No, but with access to the Clarity platform you can remotely assess and evaluate the performance of a Clarity enabled Zen-O™ portable oxygen concentrator and may be able to provide advice that could resolve issues based on the data available.

IS MY ZEN-O™ AND ASSOCIATED DATA SECURE?

We take data security very seriously at GCE Healthcare. All data is hosted and transmitted securely by world class data and telecommunications providers.

CAN I HAVE MULTIPLE USER PROFILES?

There are multiple access profiles available on the Clarity network. This allows you to personalise the appropriate access rights and profile for a user.

HOW DO I SET UP A PATIENT?

Setting up a patient is simple for both you and them. No patient effort is required and there is no need to pair the enabled POC device to the patient's phone or wifi network. All enabled Zen-O™ devices are supplied with a ready to go SIM – allowing you to easily register the patient and pair their device on the Clarity platform. Instructions on how to do this are available in the Clarity user manual on the Clarity platform.

WHAT COUNTRIES DOES CLARITY COVER?

Clarity offers a global coverage for enabled Zen-O™ POCs, a full list of countries covered is available opposite.



COUNTRIES COVERED BY CLARITY

Afghanistan	Ecuador	Kyrgystan	Saint Kitts and Nevis
Albania	Egypt	Latvia	Saint Lucia
Anguilla	El Salvador	Lao	Saint Vincent and the
Antigua and Barbuda	Estonia	Liechtenstein	Grenadines
Argentina	Faroe Islands	Lithuania	Samoa
Armenia	Fiji	Luxemborg	Saudi Arabia
Aruba	Finland	Macao	Serbia
Australia	France	Macedonia	Singapore
Austria	Gabon	Malawi	Slovakia
Azerbaijan	Georgia	Malaysia	Slovenia
Bangladesh	Germany	Mexico	South Africa
Barbados	Ghana	Malta	Spain
Belarus	Gibraltar	Mongolia	Sri Lanka
Belgium	Greece	Moldova	Suriname
Belize	Greenland	Montenegro	Sweden
Benin	Grenada	Montserrat	Switzerland
Bolivia	Guadeloupe	Myanmar	Taiwan
Brazil	Guatemala	Nepal	Tajikistan
Bristish Virgin Islands	Guinea	Netherlands	Tanzania
Brunei Darussalam	Guyana	Netherlands Antilles	Thailand
Bulgaria	Haiti	New Zealand	Tonga
Burkina Faso	Honduras	Nicaragua	Trinidad and Tobago
Burundi	Hong Kong	Nigeria	Tunisia
Canada	Hungary	Norway	Turkey
Cayman Islands	Iceland	Oman	Turks and Caicos
Chad	India	Pakistan	Uganda
Chile	Indonesia	Palestine, State of	Ukraine
China	Iran	Panama	UAE
Colombia	Ireland	Papua New Guinea	United Kingdom
Congo, Republic of	Israel	Paraguay	United States
Congo, The Democratic	Italy	Peru	Uruguay
Republic	Jamaica	Philippines	Uzbekistan
Costa Rica	Japan	Poland	Venezuela
Croatia	Jordan	Portugal	Vietnam
Cyprus	Kazakhstan	Qatar	Zambia
Czech Republic	Kenya	Romania	
Denmark	Korea, Republic of	Russia	
Dominica	Kuwait	Rwanda	



Map shows GCE facility locations



GCE Ltd, 100 Empress Park, Penny Lane, Haydock,
St Helens, WA11 9DB, United Kingdom
tel.: +44 (0) 1942 292950,
email: sales@gcegroup.com
www.gcegroup.com

Art. Nr. 735100001229. Edition 1/2025