

EMMA[®] Capnograph

Portable Real-time Capnography



Actual Size

Measurements

EtCO₂

End-Tidal Carbon Dioxide

RR

Respiration Rate

- > **Immediate results** – minimal warm-up time, with end-tidal carbon dioxide (EtCO₂) and respiration rate (RR) measurements and real-time EtCO₂ waveform displayed in 15 seconds
- > **Small, portable capnograph** – lightweight design fits in the palm of your hand for mobility and convenience during short-term EtCO₂ monitoring of adult, paediatric, and infant patients
- > **Designed to fit easily onto a breathing circuit** – flexible use at multiple points of care including pre-hospital, emergency medicine, operating room, intensive care unit, and long-term acute care
- > **Rugged design** for reliable operation in challenging environments
- > **Easy to maintain** – no routine calibration required

Features

- > **Clear, continuous capnogram** of carbon dioxide values
- > **Simple, easy-to-use interface** for quick set-up and one-touch programming
- > **Audible and visual alarm system** for No Adapter, Clogged Adapter, No Breath (Apnoea), Low Battery and adjustable High and Low EtCO₂ alarm
- > **Battery life for up to 10 hours** of normal use with two standard AAA lithium batteries

Alarm Limits

Alarm limits and visual alarm status indicator, silence active alarms for two minutes

Capnogram

14.4 second sweep of CO₂ values

Power Button

Warm-up time to full accuracy in 15 seconds

End-tidal Carbon Dioxide

Quantitative EtCO₂ is updated every breath (Model 3678 displays in kPa)

Respiration Rate

RR is displayed after two breaths and updated every breath

Airway Adapter

Available in adult/paediatric and infant sizes



Performance

RANGES	
CO ₂	0-99 mmHg 0-9.9 kPa
RR	3-150 bpm
ACCURACY (STANDARD CONDITIONS)	
CO ₂	0-40 mmHg ±2 mmHg; 41-99 mmHg 6% of reading 0-5.3 kPa ±0.3 kPa; 5.4-9.9 kPa 6% of reading
RR	±1 bpm
BATTERIES	
Type	2 (two) AAA Cell Alkaline or Lithium
Battery life	6 hours (Alkaline) 10 hours (Lithium)

ENVIRONMENTAL

Operating temperature	-5 to 50o C (23 to 122o F)
Operating atmospheric pressure	70 to 120 kPa
Operating humidity	10-95%, non-condensing
Storage temperature	-30 to 70o C (-22 to 158o F)
Storage atmospheric pressure	50 to 120 kPa

PHYSICAL CHARACTERISTICS

Dimensions	2.1 x 1.5 x 1.5" (5.2 x 3.9 x 3.9 cm)
Weight	2.1 oz (59.5 g) (with Alkaline batteries)

ADAPTER INFORMATION

Dead space adult/paediatric	6 ml
Dead space infant	1 ml

Kit



> EMMA Kit*

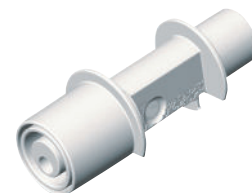
EMMA (mmHg) PN 3639
EMMA (kPa) PN 3678

Accessories



> EMMA Airway Adapter

Adult/Paediatric
Box of 25
PN 17448



> EMMA Airway Adapter

Infant
Box of 10
PN 17449

*In order for the EMMA Kit to provide readings, either of the listed airway adapters is required. Kit includes EMMA, pouch, and lanyard.

For professional use. See instructions for use for full prescribing information, including indications, contraindications, warnings, and precautions.

Masimo U.S.
Tel: 1 877 4 Masimo
info-america@masimo.com

Masimo International
Tel: +41 32 720 1111
info-international@masimo.com

